

ENTRANCE

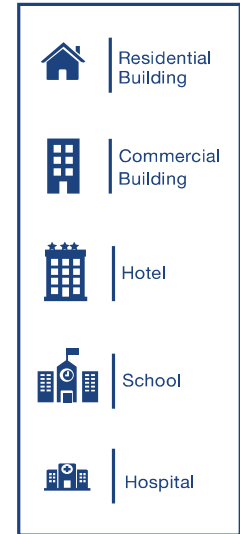
**BF15ED | THERMAL ENTRANCE DOOR SYSTEM**

**TECHNICAL DATA**

With its wide range scope of design applications BF15ED entrance door system offers following feature:

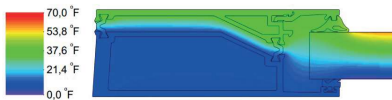
**STANDARD FEATURES**

- 5" sight line on verticals
- 1-3/4" frame depth
- 1/8" Wall thickness
- Thermally broken aluminum profiles
- Powder coating with all standard RAL colors and various anodized colors
- Qualicoat & Qualanod certificated surface treatment applications
- 1/4" to 1" Insulated glass unit
- Air, water and dust sealing gaskets made of EPDM
- Moderate to high traffic applications
- Maximum size single 4' x 8', pair 8' x 8'



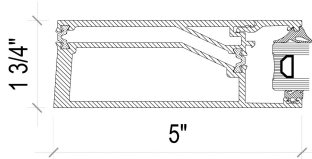
**OPTIONAL FEATURES**

- Wide variety of bottom rail
- Powder coated dual finish (two-tone color) option
- High insulated profile system for better energy efficiency
- 1/8" to 1" Insulated glass with low-e or solar low-e options
- Warm edge spacer and triple IGU to maximize energy efficiency
- Sound insulated profile system for superior OITC ratings
- Silicone gaskets



**PERFORMANCE VALUES**

Air infiltration	< 1.0 cmf/ft² @1.57 psf
Wind resistance design	30 psf
Wind resistance overload	45 psf
U-Value Single door	0.51 Btu/(h.ft² °F)
U-Value Double door	0.50 Btu/(h.ft² °F) 0.28
IGU U-Value	Btu/(h.ft² °F)



**PERFORMANCE TEST STANDARDS**

Air Infiltration	ASTM E283
Structural – Uniform Wind Load	ASTM E330
Thermal Transmittance U-Factor	AAMA1503; NFRC 100
Condensation Resistance (CRF, CR)	AAMA1503; NFRC 500
Solar Heat Gain Coefficient (SHGC)	AAMA507; NFRC 200
Visible Transmittance (VT)	
Sound Transmission (STC, OITC)	ASTM E90, E1425

