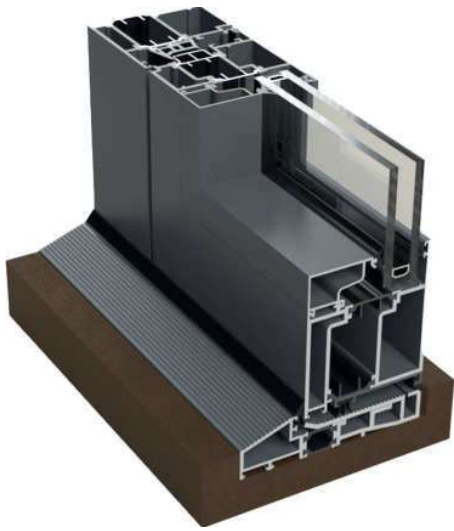


BF74 | DOOR SYSTEM

TECHNICAL DATA



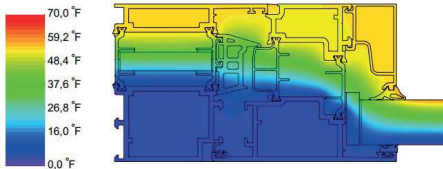
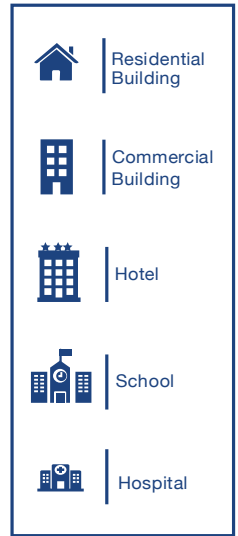
With its wide range scope of design applications BF74 door offers following feature:

STANDARD FEATURES

- 5-15/6" to 6-5/8" vertical stile
- 2-15/16" to 3-5/16" frame depth
- 3/32" Wall thickness
- Powder coating with all standard RAL colors and various anodized colors
- Qualicoat & Qualanod certified surface treatment applications
- 1" Insulated glass unit
- Air, water and dust sealing gaskets made of EPDM
- Maximum size single 4' x 8', pair 8' x 8'

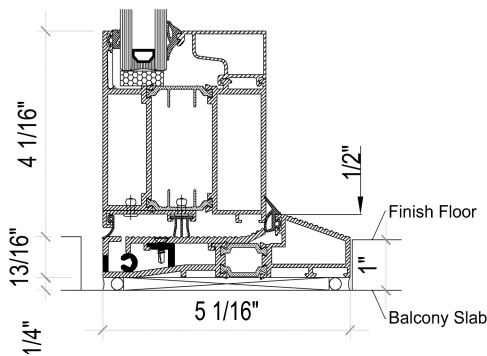
OPTIONAL FEATURES

- Powder coated dual finish (two-tone color) option
- High insulated profile system for better energy efficiency
- 1/8" to 1 1/8" Insulated glass with low-e or solar low-e options
- Warmedge spacer
- Sound insulated profile system for superior OITC ratings
- Silicone gaskets
- Handles with locking mechanism
- Bottom in 10" height for ADA compliance



PERFORMANCE VALUES

	PG-ATD-40
Air infiltration	<0.1 cfm/ft ² @ 6.24 psf
Water penetration	10 psf
Wind resistance design	40 psf
Wind resistance overload	60 psf
U-Value	0.33 Btu/(h.ft ² .°F) 0.28
IGU U-Value	Btu/(h.ft ² .°F)



PERFORMANCE TEST STANDARTS

Air infiltration	ASTM E283
Water penetration	ASTM E331
Structural - Uniform Wind Load	ASTM E330
Thermal transmittance U-Factor	NFRC100, 102, 500; AAMA 1503
Solar Heat Gain Cefficient (SHGC)	NFRC 200
Visible Sound Transmission (STC, OITC)	ASTM E90