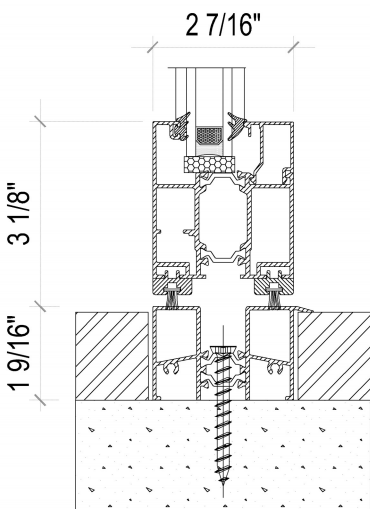
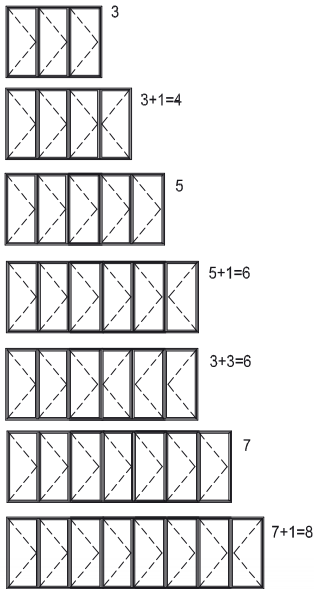




**FDT62 | FOLDING DOOR SYSTEMS**

**TECHNICAL DATA**



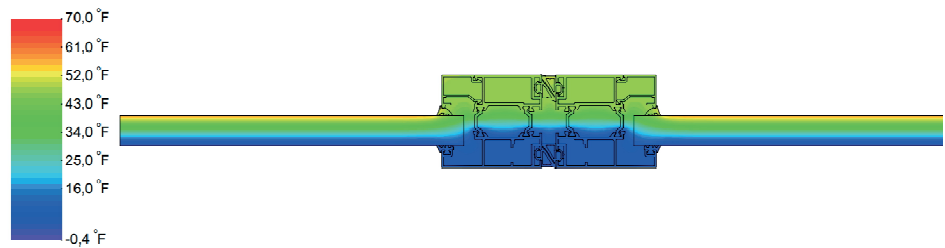
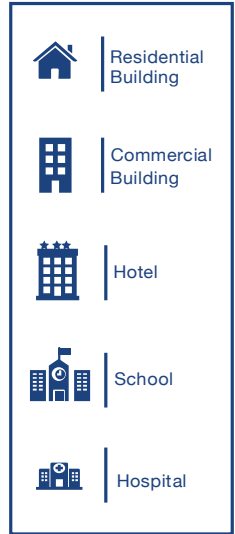
With its wide range scope of design applications FDT62 folding door system offers following features

**STANDARD FEATURES**

- 2-1/2" frame depth
- 1/16" wall thickness
- Thermally broken aluminum profiles
- Powder coating with all standard RAL colors and various anodized colors
- Qualicoat & Qualanod certified surface treatment applications

**OPTIONAL FEATURES**

- Powder coated dual finish (two-tone color) option
- High insulated profile system for better energy efficiency
- Up to 1-1/2" Insulated glass with low-e or solar low-e options
- Warmedge spacer and triple IGU to maximize energy efficiency
- Sound insulated profile system for superior OITC ratings
- Hardware options to limit vent access to custodial use
- Stainless steel handle
- Handles with locking mechanism



**PERFORMANCE VALUES**

Air infiltration	<0.3 cfm/ft <sup>2</sup> @ 6.24 psf
Water penetration	4.59 psf
Wind resistance design	30 psf
Wind resistance overload	45 psf
U-Value	0.33 - 0.54 Btu/(h.ft <sup>2</sup> . °F)

**PERFORMANCE TEST STANDARTS**

Air infiltration	ASTM E283
Water penetration	ASTM E331
Structural - Uniform Wind Load	ASTM E330
Thermal transmittance U-Factor	NFRC100, 102, 500; AAMA 1503
Solar Heat Gain Cefficient (SHGC)	NFRC 200
Visible Sound Transmission (STC, OITC)	ASTM E90