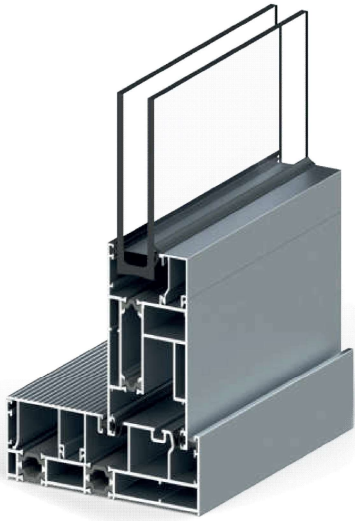




LS60 | LIFT & SLIDE DOOR SYSTEMS

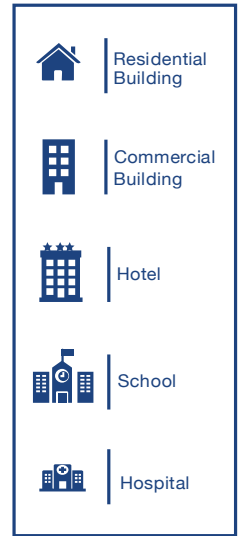
TECHNICAL DATA



With its wide range scope of design applications LS60 sliding door system offers following features:

STANDARD FEATURES

- 2-3/8" Sash depth
- 1/16" wall thickness
- Thermally broken aluminum profiles
- Powder coating with all standard RAL colors and various anodized colors
- Qualicoat & Qualanod certified surface treatment applications.
- 1" Insulated glass unit
- Air, water and dust sealing gaskets made of EPDM
- Stainless steel and aluminum projected hardware
- Aluminum handle
- Sash carry capacity 330lbs.

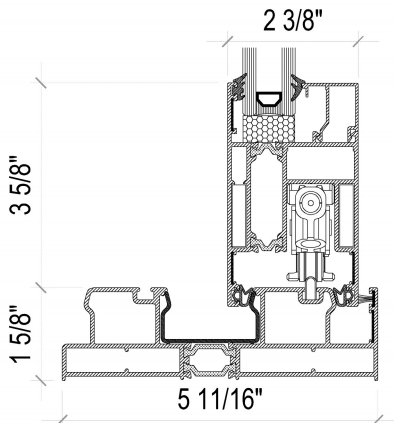
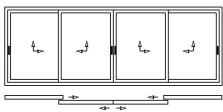
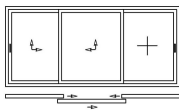
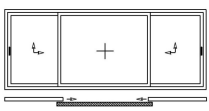
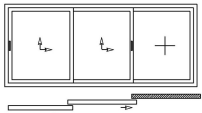
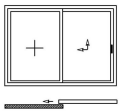
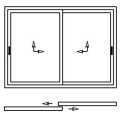


OPTIONAL FEATURES

- Powder coated dual finish (two-tone color) option
- High insulated profile system for better energy efficiency
- Up to 1-1/2" Insulated glass with low-e or solar low-e options
- Warmedge spacer and triple IGU to maximize energy efficiency
- Sound insulated profile system for superior OITC ratings
- Stainless steel handle
- Silicone gaskets
- Sash carry capacity 660lbs.

PERFORMANCE VALUES

Air infiltration	<0.3 cfm/ft ² @ 6.24 psf
Water penetration	8 psf
Wind resistance design	40 psf
Wind resistance overload	60 psf
U-Value	0.44 Btu/(h.ft ² .°F)
IGU U-Value	0.28 Btu/(h.ft ² .°F)



PERFORMANCE TEST STANDARTS

Air infiltration	ASTM E283
Water penetration	ASTM E331
Structural - Uniform Wind Load	ASTM E330
Thermal transmittance U-Factor	NFRC100, 102, 500; AAMA 1503
Solar Heat Gain Cefficient (SHGC)	NFRC 200
Visible Sound Transmission (STC, OITC)	ASTM E90